



Dartmoor's Dynamic Landscapes

Partnership programme supported by NLHF

Annual Town Meeting – Okehampton, 8th April 2024

Hannah Kingsbury, hkingsbury@dartmoor.gov.uk



Made possible with





What is DDL?

A two stage programme of work between 2023 – 2029
Currently in the development phase, submitting bid in August 2024, expect decision in December, if successful delivery phase from January 2025 for 5 years.

A Partnership

Primarily funded by National Lottery Heritage Fund

With a focus on natural heritage in the landscape and more sustainable communities



Partnership



WOODLAND TRUST



sustrans

Dartmoor's

farmers



South West Water



Shallowford Farm
making the difference



making the difference



swlakes trust



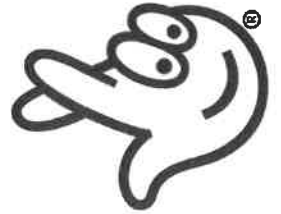
Environment Agency



South Devon National Landscape

Local communities

Made possible with



Heritage Fund



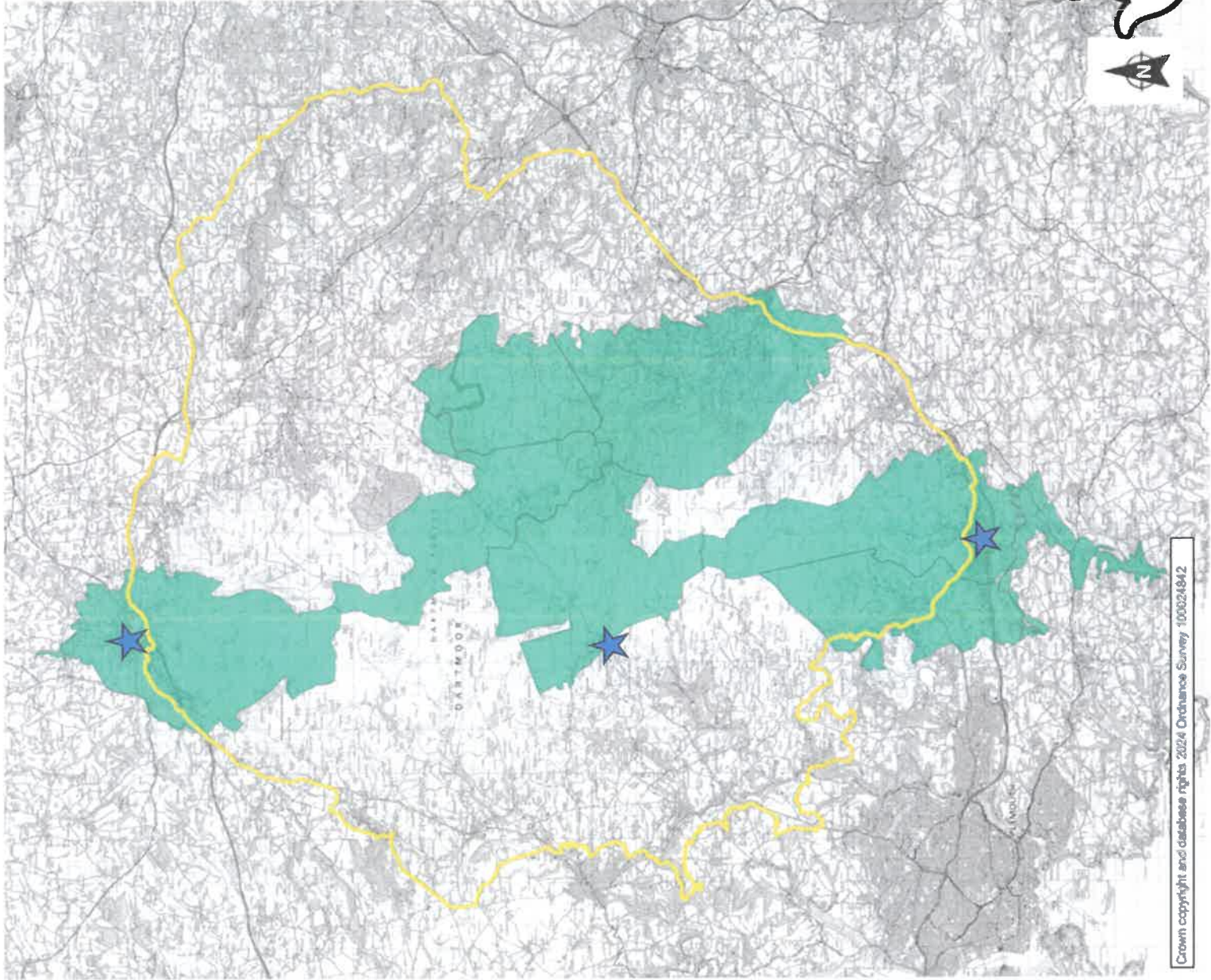
EMERGENCY EXIT ARTS





Scheme Area

★ Gateway towns



Crown copyright and database rights 2024 Ordnance Survey 100024842



Aims of the scheme

creating more naturally resilient landscapes, through working with land managers and farmers -

- *we will have a better understanding of grassland and river habitats, moorland birds, and ancient trees;*
- *capturing more water and carbon in the landscape through natural flood management, peatland restoration and restoration of ancient woodland sites;*
- *facilitating knowledge sharing through mentoring opportunities and events.*

and connecting people to their place, with a specific focus on the gateway towns of Okehampton, Ivybridge and

Princetown –

- *improving access and route knowledge in and from the towns to enable active travel to green spaces;*
- *celebrating landscape heritage, for example through a programme of river and moorland festivals;*
- *opportunities for community grant funding.*



Made possible with

Heritage
Fund

FLOCK 

EEA

EMERGENCY
EXIT ARTS

RIVER AND MOORLANDS FESTIVALS



Made possible with

**Heritage
Fund**

OPEN COMMUNITY MEETING

WHEN: THURS 21ST MARCH

WHERE: MAKE SOUTHWEST

TIMES: 4PM OR 6PM

INFO: WWW.EEA.ORG.UK



Email info@eea.org.uk to join the project mailing list to get updates and be included in future conversations



Gateway Hubs

Okehampton Hub

To promote routes within and from the town and deliver events.

Wild Echoes

To explore stories of the surrounding landscape, including how it has changed through human and natural influences.

A Warm Welcome

"Welcome packs" for new housing developments.

Miles Without Stiles

Improving routes to make them more accessible, e.g. the Granite Way.

Trishaw Events

Delivering trishaw events (for example with Okey Memory Café) – a trishaw has a cycle "pilot" and a seat for 1 or 2 persons to sit on.

Bike It Wild

Sustrans will deliver active travel confidence sessions in schools, along with opportunities to access the surrounding landscape.





Moorscapes

- community-led grant schemes for nature



This will offer an opportunity to community groups to fund small projects (max. £10,000). Guidelines are still being developed, but grant applications will be evaluated quarterly by a panel.



Made possible with
Heritage Fund
Black-a-lor Copse © Adrian Oakes



